

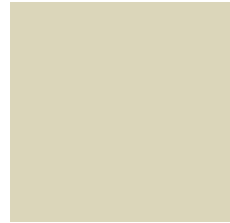
## Finiture / Finishes / Finitions / Ausführungen / Terminaciones

**SCRIVANIA (piani) - SCAFFALI (fianchi - schiene) - CASSETTIERE (top - frontali) - LIBRERIA (top - ante - fondi) / DESK (tops) - SHELVES (sides - backs) - PEDESTALS (tops - fronts) - BOOKCASES (tops - doors - bottoms) / BUREAU (plans) - RAYONNAGES (côtés - panneaux arrière) - CAISSONS (dessus - façades) - BIBLIOTHÈQUES (dessus - portes - fonds) / SCHREIBTISCH (Flächen) - REGALE (Seitenteile - Rückwände) - SCHUBLADENSCHRÄNKE (Top - Vorderseiten) - BÜCHERSCHRÄNKE (Top - Türen - Böden) / MESA (tablero) - ESTANTERÍAS (laterales - traseras) - CAJONERAS (encimera - frentes) - LIBRERÍAS (encimera - puertas - traseras)**

**MELAMINICO TINTA UNITA / PLAIN MELAMINE / MÉLAMINÉ TEINTE UNIE / MELAMIN EINFARBIG / MELAMINA COLOR LISO**

**Pannelo nobilitato con decorativi melaminici / Panel with wood-effect melamine finish / Panneau surfacé avec papiers décoratifs mélaminés / Edelholzpaneel mit Melamindekors / Tablero revestido con papel decorativo impregnado de melamina**

### AVORIO



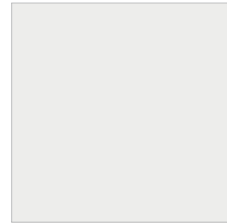
Ivory. Ivoire.  
Elfenbein. Marfil.

### GRIGIO CHIARO



Light grey. Gris clair.  
Hellgrau. Gris claro.

### BIANCO



White. Blanc.  
Weiß. Blanco.

**LEGNO / WOOD / BOIS / HOLZ / MADERA**

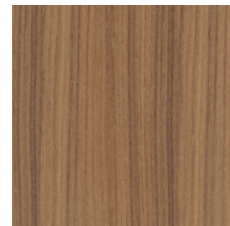
**Pannelo in conglomerato ligneo / Wooden particle board panel / Panneau particules en bois / Paneel in Holzhaufen / Panel en conglomerado de madera**

### ROVERE TINTO WENGÈ



Wengé. Wenge'.  
Wengè. Wengé

### NOCE CANALETTO



Canaletto walnut. Noyer  
d'Amérique. Schwarznuss.  
Nogal canaletto.

**MELAMINICO DECORO LEGNO / WOOD-EFFECT MELAMINE / MÉLAMINÉ DÉCOR BOIS /**

**MELAMINVERKLEIDET MIT HOLZDEKORS / MELAMINA DECORACIÓN MADERA**

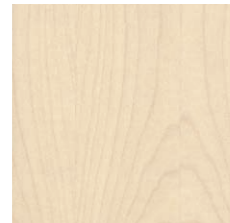
**Pannelo nobilitato con decorativi melaminici / Panel with wood-effect melamine finish / Panneau surfacé avec papiers décoratifs mélaminés / Edelholzpaneel mit Melamindekors / Tablero revestido con papel decorativo impregnado de melamina**

### FAGGIO



Beech. Hêtre.  
Buche. Haya.

### ACERO



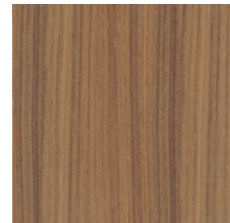
Maple. Érable.  
Ahorn. Arce.

### WENGÈ



Wengé. Wenge'.  
Wengè. Wengé

### NOCE CANALETTO



Canaletto walnut.  
Noyer d'Amérique.  
Schwarznuss.  
Nogal canaletto.

**MOBILE DI SERVIZIO (top - frontali) - CASSETTO INTERNO SEGRETO - SOTTOPIANO PORTACARTE - CONTENITORE DI SERVIZIO (fianchi) / STORAGE CABINET (top - front panels) - CONCEALED INTERIOR DRAWER - UNDER-TOP STORAGE FOR PAPERS - STORAGE UNIT (sides) / MEUBLE DE SERVICE (dessus - façades) - TIROIR INTÉRIEUR SECRET - PLAN ESCAMOTABLE PORTE-DOCUMENTS - ARMOIRE DE SERVICE (côtés) / BEISTELLMÖBEL (Oberseite - frontseite) - GEHEIMES INNENFACH - UNTERHALB LIEGENDER PAPIERHALTER - ZUSATZBEHÄLTER (Seiten) / MUEBLE DE SERVICIO (encimera - frentes) - CAJÓN INTERIOR SECRETO - BANDEJA PORTAPAPELES - CONTENEDOR DE SERVICIO (laterales)**

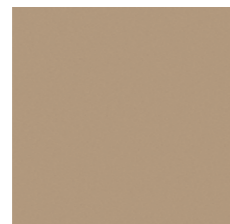
**LACCATI MDF / VARNISHED MDF / LAQUÉS MDF / MDF - LACKIERT / LACADOS MDF**

### BROWN



Brown. Brown.  
Brown. Marrón.

### CAMMELLO



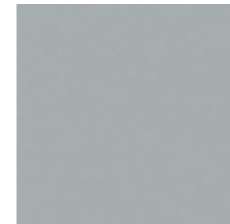
Camel brown. Beige.  
Kamel. Camello.

**LIBRERIA E CASSETTIERE (struttura) / BOOKCASES AND PEDESTALS (structure) / BIBLIOTHÈQUES ET CAISSONS (structure) / BÜCHERSCHRÄNKE UND SCHUBSCHLADENSCHRÄNKE (aufbau) / LIBRERÍAS Y CAJONERAS (estructura)**

**MELAMINICO / MELAMINE / MÉLAMINÉ / MELAMIN / MELAMINA**

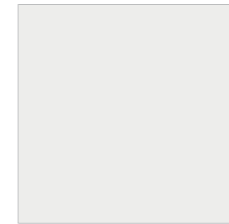
**Pannelo nobilitato con decorativi melaminici - finitura a cera / Panel with melamine finish - waxed / Panneau surfacé avec papiers décoratifs mélaminés - finition à la cire / Edelholzpaneel mit Melamindekors / Tablero revestido con papel decorativo impregnado de melamina - acabado cera**

### GRIGIO ALLUMINIO



Aluminium grey. Gris  
aluminium. Aluminiumgrau.  
Gris aluminio.

### BIANCO



White. Blanc.  
Weiß. Blanco.

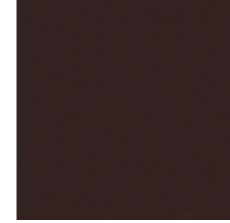
**SCRIVANIA (piani) / DESK (tops) / BUREAU (plans) / SCHREIBTISCH (Flächen) / MESA (tableros)**

**CRISTALLO / CRYSTAL / CRISTAL / KRISTALL / CRISTAL**

**LIBRERIA (ante) / BOOKCASES (doors) / BIBLIOTHÈQUES (portes) / BÜCHERSCHRÄNKE (Türen) / LIBRERÍAS (puertas)**

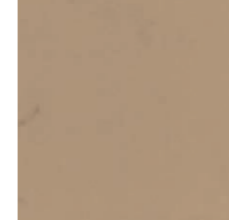
**CRISTALLO / CRYSTAL / CRISTAL / KRISTALL / CRISTAL**

### CRISTALLO BROWN



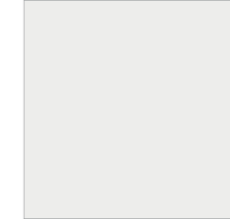
Brown crystal. Cristal brun.  
Brauner Kristall. Cristal  
marrón.

### CRISTALLO CAMMELLO



Camel brown glass. Cristal  
beige. Kristalglas kamel.  
Cristal camello.

### CRISTALLO BIANCO



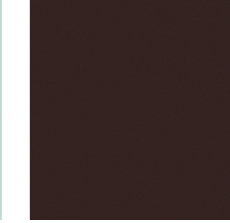
White crystal. Cristal blanc.  
Weißer Kristall. Cristal  
blanco.

### CRISTALLO ACIDATO



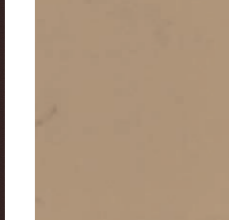
Acid-etched crystal.  
Acide-gravé cristal.  
Säure-geätzten kristall.  
Cristal ácido-grabado

### CRISTALLO BROWN



Brown crystal. Cristal brun.  
Brauner Kristall. Cristal  
marrón.

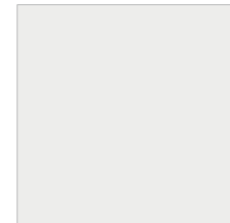
### CRISTALLO CAMMELLO



Camel brown glass. Verre  
beige. Kristalglas kamel.  
Cristal camello.

**SCREEN / SCREEN / PANNEAU ÉCRAN / ABSCHIRMUNG / SEPARADOR**

### MELAMINICO BIANCO



White melamine.  
Mélaminé blanc.  
Weißes Melamin.  
Melamina blanca.

### MELAMINICO GRIGIO



Grey melamine.  
Mélaminé gris. Graues  
Melamin. Melamina gris.

### MELAMINICO AVORIO



Ivory melamine. Mélaminé  
ivoire. Elfenbeinfarbenes  
Melamin. Melamina marfil

### CRISTALLO SATINATO



Glazed crystal. Cristal  
satiné. Glasig-glänzender  
Kristall. Cristal esmaltado.

### TESSUTO

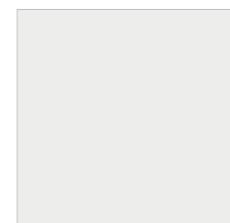


Fabric. Tissu.  
Gewebe. Tela

**STRUTTURE IN METALLO / METAL STRUCTURES / STRUCTURES EN MÉTAL / METALLAUFBAU / ESTRUCTURAS DE METAL**

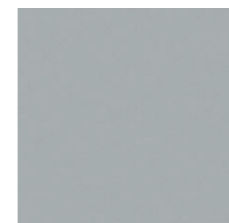
**ALLUMINIO VERNICIATO / VARNISHED ALUMINIUM / ALUMINIUM LAQUÉ / LACKIERTES ALU / ALUMINIO PINTADO**

### BIANCO



White. Blanc.  
Weiß. Blanco.

### ALLUMINIO LUCIDO/OPACO



Polished/satin aluminium.  
Aluminium poli/mat.  
Alu glänzend/matt.  
Aluminio brillante/mate.

**Tessuti (fare riferimento alla tabella colori) / Fabrics (see colour chart) / Tissus (se référer au nuancier) / Gewebe (Bezugnahme: Farbtabelle) / Telas (véase la tabla de colores)**